

# Wireless Access at TCAT

## Quick Start Guide



### Contents

[Who can access it?](#) | [Where is it available?](#) | [What can be accessed?](#) | [How do I get access?](#) | [Registering your computer](#) | [Configuring your computer](#) | [Appendix A – Finding the MAC Address](#)

### 1. Who can access the College wireless network?

- a. Staff and current students who have registered their computer with the College
- b. Users of TCAT laptops issued by Computer Services

### 2. Where is it available?

The hotspots are located in the following areas of TCAT:

- A011, A-Block Boardroom, A-Block Foyer, A-Block LRC Ground Floor, A-Block Refectory
- B017, B018, B027, B028
- C014, C-Block Student Arena. C209
- W104, W302, W303.

*Throughout 2008 more 'hotspots' will be added; information will be sent to staff and students via email.*

### 3. What can be accessed?

You get access to the web and the same access to The Hub as from home

### 4. How to get access.

#### Step 1. Register your computer

- From your Hub home page go to *Wireless Access form*
- Enter your computer's wireless Ethernet MAC address and click register. ([See Appendix A](#))

You will now need to wait until next day to continue.

#### Step 2. Configuration for the TCAT system.

If your laptop is set up for wireless access you should be able to connect to TCAT\_WLAN\_WPA using the network key you were given when you registered. If not, see [Computer Services Guide](#)

## Appendix A: How to find the MAC (media access control) address

### Windows (XP)

Click "start" then "run" then type "cmd" then click "OK"

A black box will open

Type "ipconfig /all" into it and press enter

Look down the list and find:

"Ethernet adaptor Wireless network connection"

The computer's MAC address is in the following line

"Physical address.....00-00-00-00-00-00"

(Replace the zeros with the correct value seen on your screen)

See below for an (old!) example.

```

Description . . . . . : Broadcom 570X Gigabit Integrated Controller
Physical Address. . . . . : 00-0B-DB-DD-B4-D2
Dhcp Enabled. . . . . : Yes
Autoconfiguration Enabled . . . . . : Yes
IP Address. . . . . : 10.5.24.188
Subnet Mask . . . . . : 255.255.0.0
Default Gateway . . . . . : 10.5.1.1
DHCP Server . . . . . : 10.5.1.170
DNS Servers . . . . . : 10.5.1.12
                        10.7.1.197
Lease Obtained. . . . . : Friday, November 14, 2003 10:18:05 AM
Lease Expires . . . . . : Saturday, November 15, 2003 4:19:05 AM

Ethernet adaptor Wireless Network Connection:

Media State . . . . . : Media disconnected
Description . . . . . : Dell TrueMobile 1300 WLAN Mini-PCI Card
Physical Address. . . . . : 00-90-4B-14-95-58

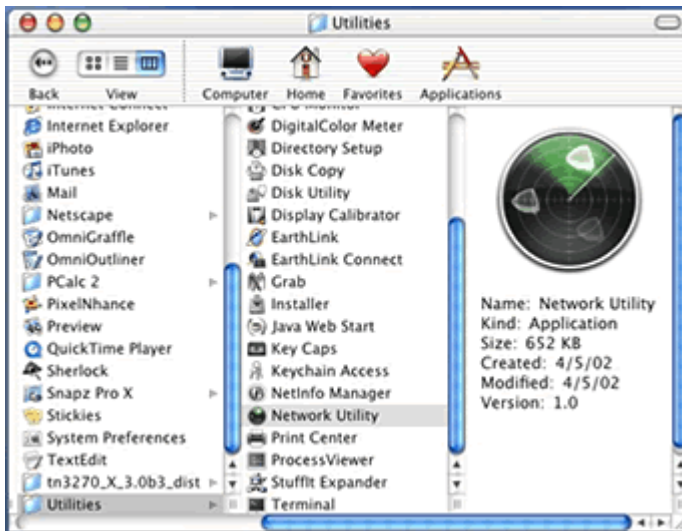
C:\Documents and Settings\th>
```

### Apple Macs:

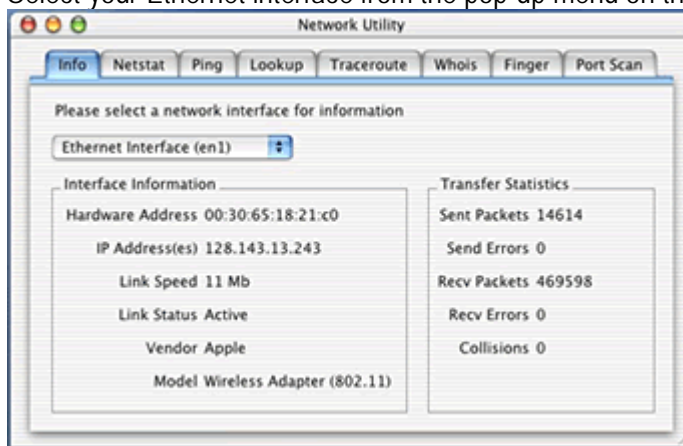
- Mac OS 9.x
  1. Click on the Apple Menu.
  2. Click on the AirPort icon.
  3. Make sure the settings section is expanded.
  4. Copy down the AirPort ID. Make sure that you copy it down correctly. Failure to do so may cause you not to be able to access the wireless network.

- Mac OS X

In the Finder navigate to the Utilities folder in the Applications folder.



1. Double click "Network Utility".
2. Select your Ethernet interface from the pop-up menu on the Info tab.



3. Click on the Info tab. Choose Ethernet Interface. The colon separated 12 digit alphanumeric code labelled Hardware Address is your MAC address.